



## 19 Balowrie Street Yowie Bay NSW

4 3 2

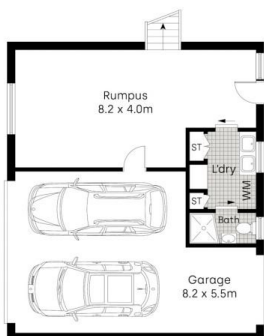
Offered to the market for the first time in over 60 years, rarely does an opportunity arise to purchase a spacious, solid split-level family home of this calibre on a sizeable, north-facing corner lot with untapped scope and potential along the picturesque Yowie Bay peninsula. The large corner block of 866 sqm\* reveals a solid brick home with character features and boundless potential throughout, with a substantial, forward-thinking floorplan inspiring possibilities for family living and entertaining. Positioned in a tightly held locale, this impressive home offers generous proportions throughout, and vast potential for the discerning purchaser whether looking to renovate, re-build or develop (S.T.C.A) within this popular, serene pocket located only moments to Yowie Bay Public School, boat ramp and local café.

**Type** : House  
**Price** : Auction  
**Land Size** : 866.27 sqm  
**View** : <https://www.mitchellestateagents.com.au/8125492>

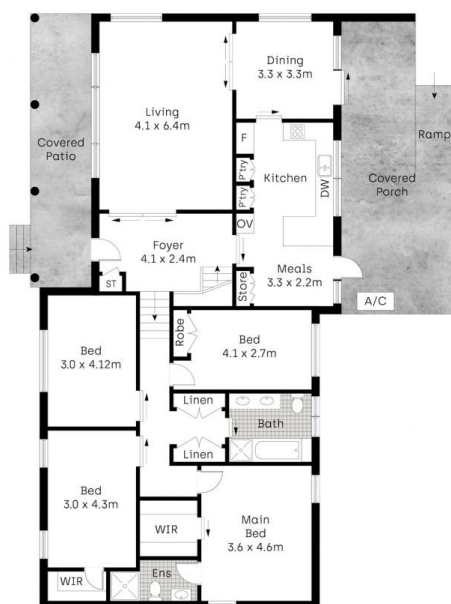


**James Mitchell**  
 0405 951 570

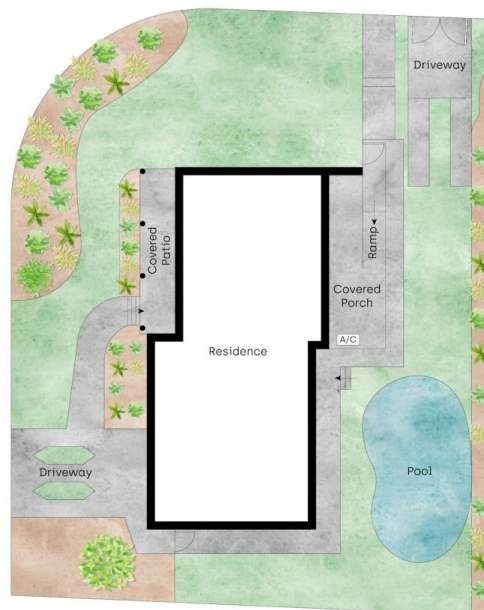
[For full version visit the website](https://www.mitchellestateagents.com.au)



Lower Ground Floor



Ground Floor



Site Plan



Whilst [bwrm.com.au](http://bwrm.com.au) has made every attempt to ensure the accuracy of the floor plan contained here, measurements are approximate and no responsibility is taken for any error, omission, or mis-statement. This plan is for illustrative purposes only.

19 Balowrie Street, Yowie Bay

**Mitchell** Estate Agents