



## 9/12-14 Clubb Crescent Miranda NSW

2 1 2

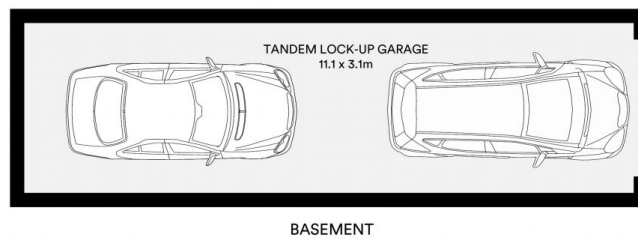
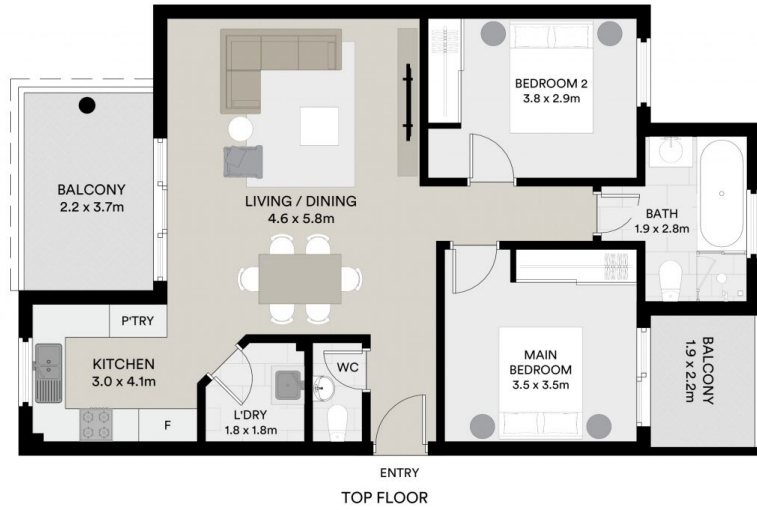
Privately positioned with a top-floor rear of complex setting, this well presented and light-filled, two-bedroom apartment encompasses a comfortable and spacious floorplan within an ideal lifestyle locale, situated just moments to Westfield Miranda, train station and local amenities. Set away from the street and providing an oversized free-flowing floorplan with peaceful, leafy outlook towards the city and botany bay, this low-maintenance apartment would suit the discerning resident seeking a quiet, yet convenient lifestyle setting.

- Spacious, light and bright open-plan living and dining zones with easy care timber-style flooring, and access to private covered balcony
- Immaculate kitchen with stone benchtops, stainless appliances, plentiful storage
- Two generous bedrooms, both with timber-style flooring

**View :** <https://www.mitchellestateagents.com.au/8113647>



**James Mitchell**  
0405 951 570



Whilst [bwrn.com.au](http://bwrn.com.au) has made every attempt to ensure the accuracy of the floor plan contained here, measurements are approximate and no responsibility is taken for any error, omission, or mis-statement. This plan is for illustrative purposes only.

9/12-14 Clubb Crescent, Miranda

**Mitchell** Estate Agents