



3/614 Princes Highway Kirrawee NSW

2 1 1

Privately placed with an elevated ground-floor position, this beautifully presented, spacious two-bedroom apartment exudes comfortable living and central lifestyle appeal, situated just moments to Kirrawee village, train station and South Village precinct. Ideally set away from the street, the apartment delivers a surprisingly oversized free-flowing floorplan with peaceful, leafy outlook, appealing to the discerning first-home buyer, downsizer or investor alike seeking the ideal low-maintenance home, within a convenient setting.

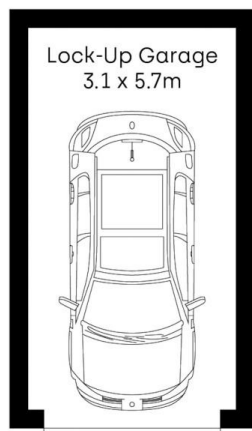
- Spacious, light and bright carpeted open-plan living and dining zones flowing to oversized entertaining balcony
- Immaculate poly kitchen with quality appliances, plentiful storage and additional balcony access

[For full version visit the website](https://www.mitchellestateagents.com.au/8098786)

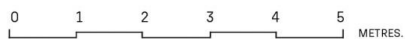
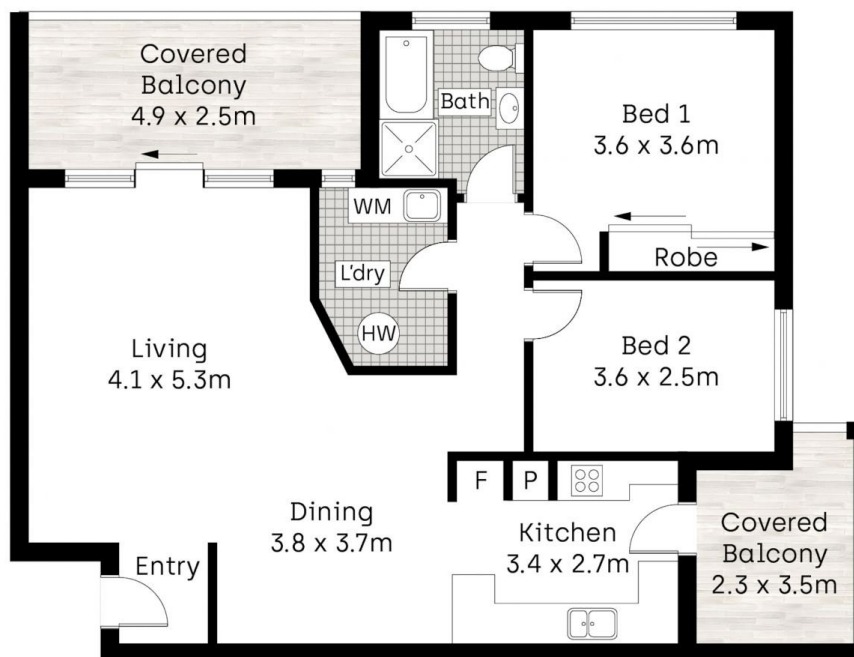
Type : Apartment
Price : For Sale
Land Size : 118 sqm
View : <https://www.mitchellestateagents.com.au/8098786>



James Mitchell
0405 951 570



Basement



Whilst bwrn.com.au has made every attempt to ensure the accuracy of the floor plan contained here, measurements are approximate and no responsibility is taken for any error, omission, or mis-statement. This plan is for illustrative purposes only.

3/614 Princes Highway, Kirrawee

Mitchell Estate Agents