

11/614 Princes Highway Kirrawee NSW

2  1  1 

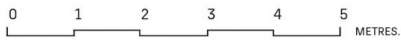
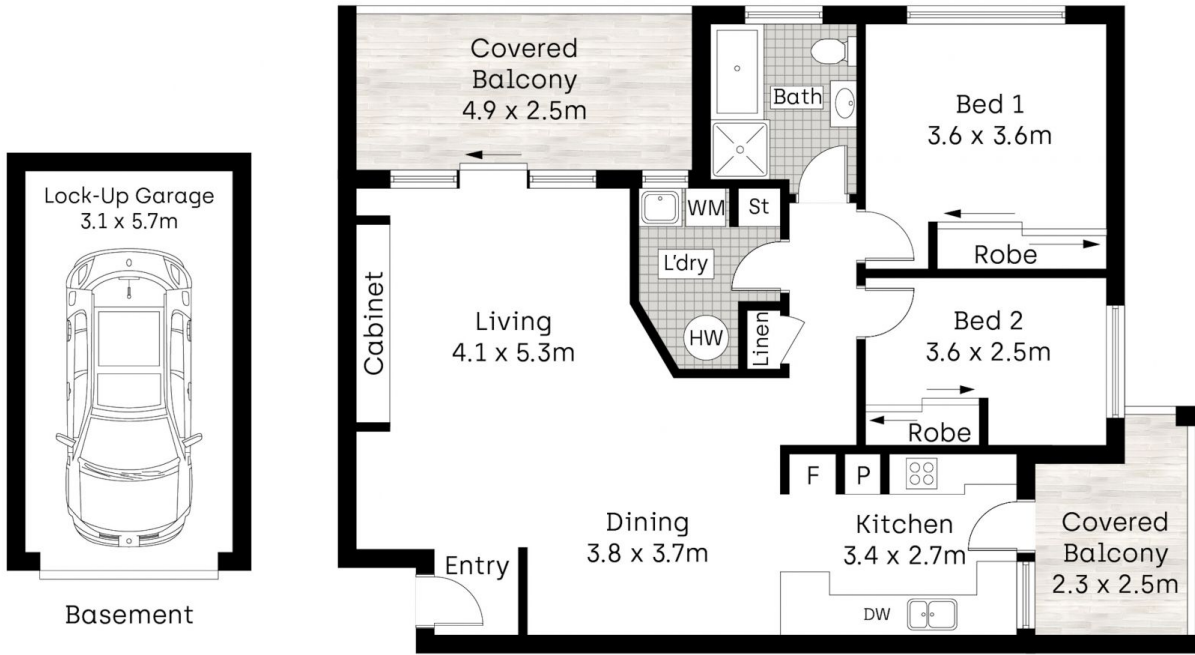
Tucked away and privately placed with a top-floor light-filled position, this beautifully updated and spacious two-bedroom apartment radiates a welcoming vibe and lifestyle appeal, situated just moments to Kirrawee village, train station and South Village precinct. Set away from the street and encompassing a versatile, and oversized free-flowing floorplan with a peaceful, leafy outlook, this spacious apartment would suit the discerning purchaser seeking the ideal low-maintenance, convenient lifestyle setting.

- Spacious, light and bright open-plan living and dining zones with stunning skylight, beautiful timber-style flooring, and split-system air-conditioning
- Immaculate kitchen with stone benchtops, quality appliances, plentiful storage and dishwasher, with additional balcony access

**Price** : \$ 771,545  
**Land Size** : 118 sqm  
**View** : <https://www.mitchellestateagents.com.au/8015875>



**James Mitchell**  
0405 951 570



Whilst [bwrn.com.au](http://bwrn.com.au) has made every attempt to ensure the accuracy of the floor plan contained here, measurements are approximate and no responsibility is taken for any error, omission, or mis-statement. This plan is for illustrative purposes only.

11/614 Princes Highway, Kirrawee

**Mitchell** Estate Agents