



11/35-37 Canberra Road Sylvania NSW

3 **2** **2**

Perfectly positioned and ideally maintained, this inviting town home offers ease of living over two levels within a calm, yet convenient pocket of Sylvania. Bright and airy throughout, the functional floorplan is complemented by a private outdoor setting with low-maintenance living in mind. Positioned within an immaculate complex, the property is located within moments from Sylvania Southgate, local bus stop, with quality schooling and local amenities nearby.

- Bright living area with abundant windows, separate dining space
- Modern stone kitchen, stainless steel appliances and dishwasher
- Three good sized bedrooms, second featuring built-in wardrobe, main bedroom with walk-in robe and ensuite

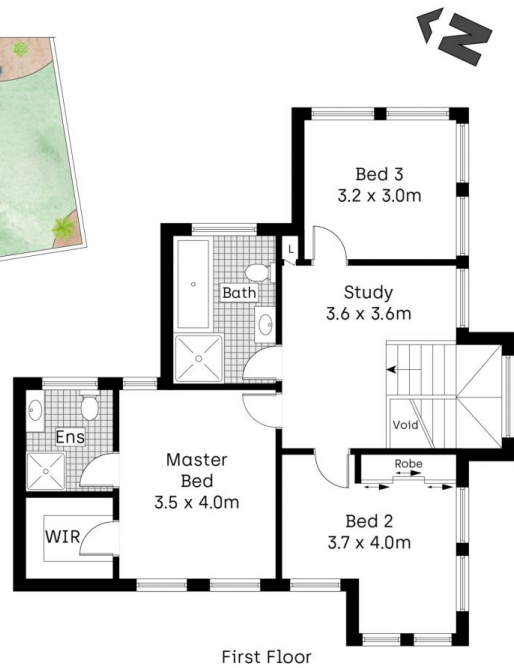
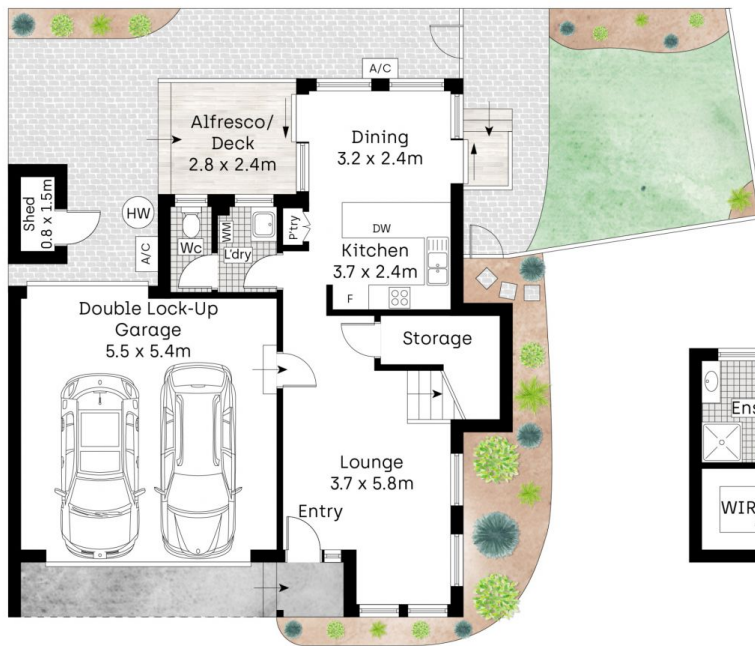
Type : Townhouse

View : <https://www.mitchellestateagents.com.au/7953386>



James Mitchell
0405 951 570

[For full version visit the website](https://www.mitchellestateagents.com.au)



0 1 2 3 4 5 METRES

3 2 2

Whilst bwwm.com.au has made every attempt to ensure the accuracy of the floor plan contained here, measurements are approximate and no responsibility is taken for any error, omission, or mis-statement. This plan is for illustrative purposes only.

11/35-37 Canberra Road, Sylvania

Mitchell Estate Agents