



## 8/233 Cope Street Waterloo NSW

1 1

Ideally placed within this vibrant city fringe location on the edge of Green Square town centre, upcoming Waterloo Station and local amenities, this contemporary residence epitomizes light-filled, private living. With open-plan interiors overlooking the peaceful complex green space, the modern sunlit floorplan is well-planned and grants the ideal low-maintenance lifestyle.

### Features:

- Bright and airy open plan tiled living and dining zones flowing through sliding doors to spacious, entertaining balcony with an elevated leafy outlook
- Modern stone kitchen with quality appliances including dishwasher, plentiful storage

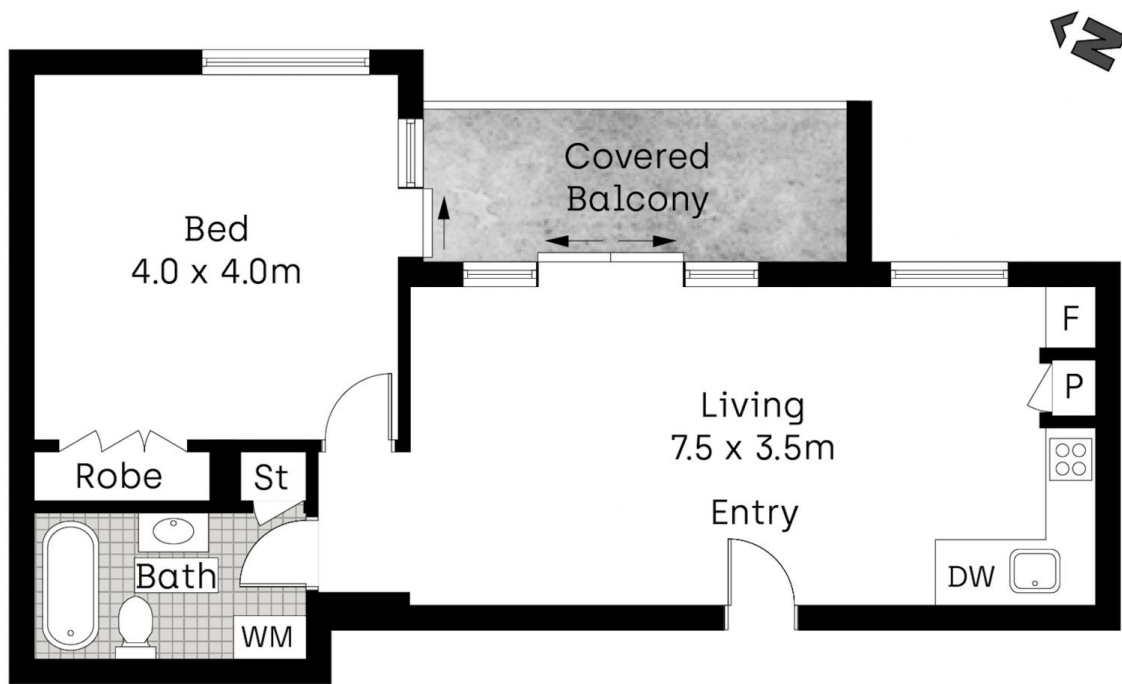
**Type** : Apartment

**View** : <https://www.mitchellestateagents.com.au/7897500>



**James Mitchell**  
0405 951 570

[For full version visit the website](https://www.mitchellestateagents.com.au)



0 1 2 3 4 5 METRES.

1 1 0

Whilst [bwrn.com.au](http://bwrn.com.au) has made every attempt to ensure the accuracy of the floor plan contained here, measurements are approximate and no responsibility is taken for any error, omission, or mis-statement. This plan is for illustrative purposes only.

8/233 Cope Street, Waterloo

**Mitchell** Estate Agents