



5/12-14 Premier Street Gymea NSW

2 1 1

Ideally positioned just a short walk to Gymea Village, and privately situated within a boutique complex of only seven homes, this modern north-facing townhouse offers low maintenance living in an ultra-convenient locale. Encompassing a spacious floorplan with sunlit living, generously sized bedrooms and a fully enclosed rear courtyard, ideal for entertaining, this well-presented home will hold appeal for a variety of buyers including downsizers, investors and first home buyers alike.

Features include:

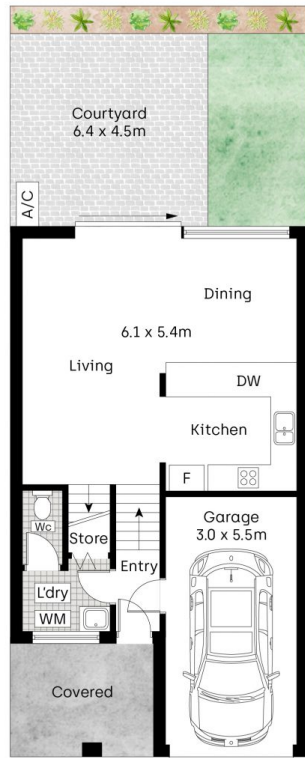
- Two large carpeted bedrooms, each on separate levels featuring air-con, and large built-in robes, main bedroom with access to front patio

[For full version visit the website](https://www.mitchellestateagents.com.au/7811922)

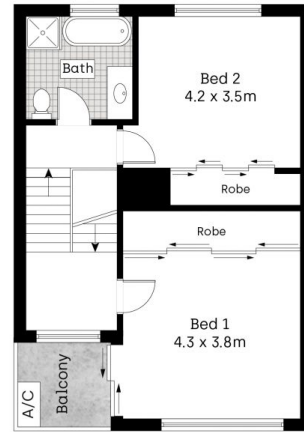
Type : Townhouse
Price : \$ 1,027,188
Land Size : 149 sqm
View : <https://www.mitchellestateagents.com.au/7811922>



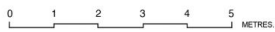
James Mitchell
 0405 951 570



Ground Floor



First Floor



Whilst bwrm.com.au has made every attempt to ensure the accuracy of the floor plan contained here, measurements are approximate and no responsibility is taken for any error, omission, or mis-statement. This plan is for illustrative purposes only.

5/12-14 Premier Street, Gympie

Mitchell Estate Agents